



# A revolution in air quality monitoring

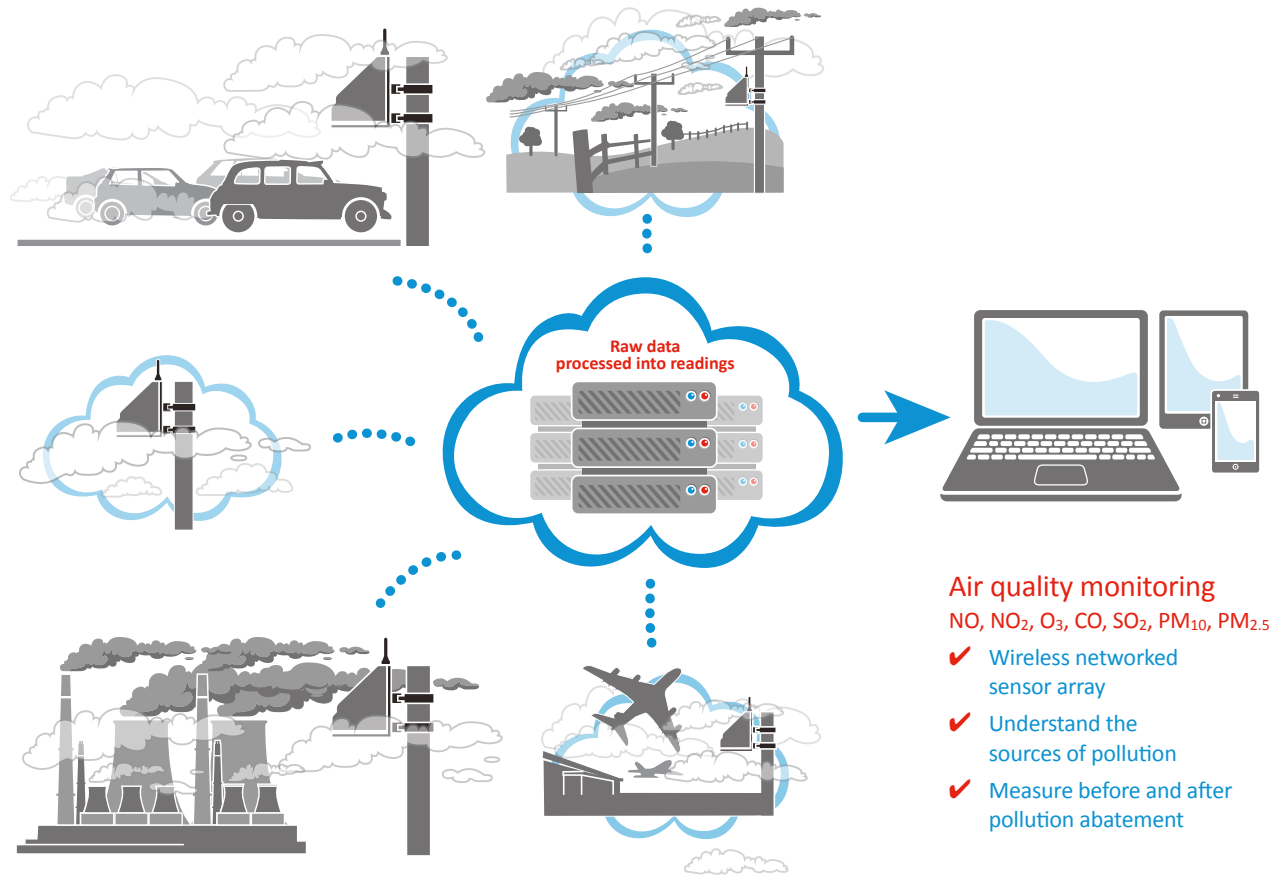
AQMesh is a wireless, battery-powered system for measuring outdoor air quality



# AQMesh

## Reduces reliance on expensive reference stations, diffusion tubes and modelling

- ✓ Spatial and time resolution in a convenient system
- ✓ A **new** approach to air quality monitoring which allows for a far greater geographical coverage and better spatial resolution
- ✓ Wide range of applications including traffic, compliance and industrial monitoring
- ✓ Proven in worldwide comparison trials
- ✓ Small (20cm), light (2Kg) and completely wireless for easy positioning and moving



- Air quality monitoring**  
NO, NO<sub>2</sub>, O<sub>3</sub>, CO, SO<sub>2</sub>, PM<sub>10</sub>, PM<sub>2.5</sub>
- ✓ Wireless networked sensor array
  - ✓ Understand the sources of pollution
  - ✓ Measure before and after pollution abatement

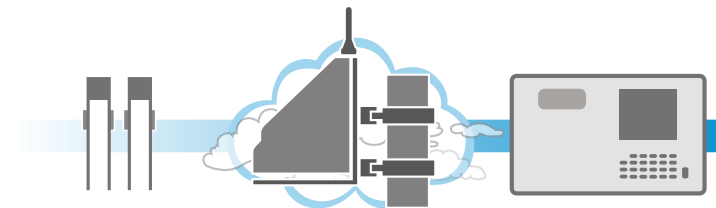
## Monitoring at user-set frequencies

### AQMesh measures

Nitrogen dioxide (NO <sub>2</sub> )	0–4,000ppb (LDL 10ppb)	* Reading interval (1 – 60 mins)	Transmission interval (30 mins – 60 mins)	Estimated Li battery life
Nitric oxide (NO)	0–4,000ppb (LDL 5ppb)		1 minute	1 year
Ozone (O <sub>3</sub> )	0–1,800ppb (LDL 5ppb)		15 minutes	> 2 years
Sulphur dioxide (SO <sub>2</sub> )	0–10ppm (LDL 10ppb)	30 minutes	60 minutes	Many years
Carbon monoxide (CO)	0–5ppm (LDL 5ppb)			
Total particle count (TPC)	0.5–30µg			
PM <sub>10</sub>	0–1,000µg/m <sup>3</sup>			
PM <sub>2.5</sub>	0–500µg/m <sup>3</sup>			
Humidity	0–100% RH			
Barometric pressure	500–1,500mb			
Pod temperature	-20 to +100°C			

**Operating conditions**  
Temperature -20°C to +40°C

The risk of sensor failure due to high humidity is greater during extended periods of relative humidity greater than 85%. Sensor replacement can be covered by an annual insurance plan.



£ ..... ££ ..... ££££  
Lower cost than reference equipment, better time resolution than diffusion tubes

## Weighing in at less than 2kg and measuring 20cm wide, AQMesh is easy to install and use

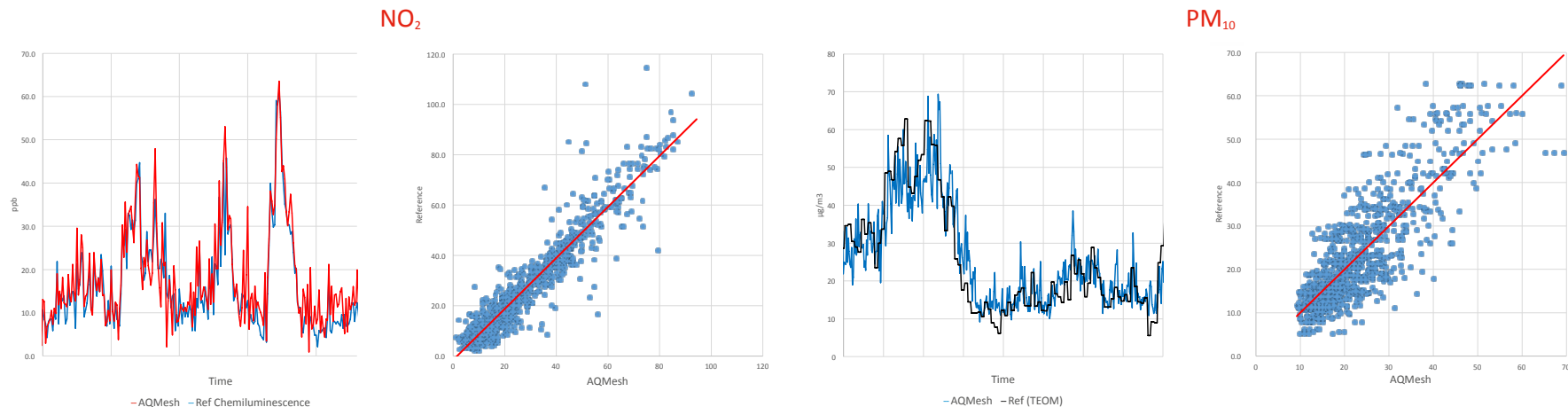
- ✓ Flexible power options including lithium battery giving 2 years life (refer to table)\*
- ✓ No need for mains power or wired communications
- ✓ AQMesh can be attached to lampposts, fence posts, signposts and walls
- ✓ Built-in wireless mobile GPRS technology means that data can be accessed at any time from any location
- ✓ 10 minutes to install (see video on AQMesh.com)
- ✓ Online correction for environmental factors and cross-gas effects

## Once stored on AQMesh's server, the user has access to:

- ✓ Corrected ppb readings
- ✓ Reading and data transmission interval settings
- ✓ Diagnosis and maintenance information
- ✓ Full online data access
- ✓ Data visualisation
- ✓ Data download options
- ✓ Data security management



## Compares well with reference equipment





AQMesh pods are sold with an essential data contract which covers:

- ✓ Data transmission
- ✓ Data processing
- ✓ Data access and download
- ✓ Secure data storage and access
- ✓ Pod/project management tools
- ✓ System maintenance, diagnosis and support



The manufacturer reserves the right to vary AQMesh specification without notice – current specification should be checked before purchase.

For further information visit [www.aqmesh.com](http://www.aqmesh.com) or email [info@aqmesh.com](mailto:info@aqmesh.com)